

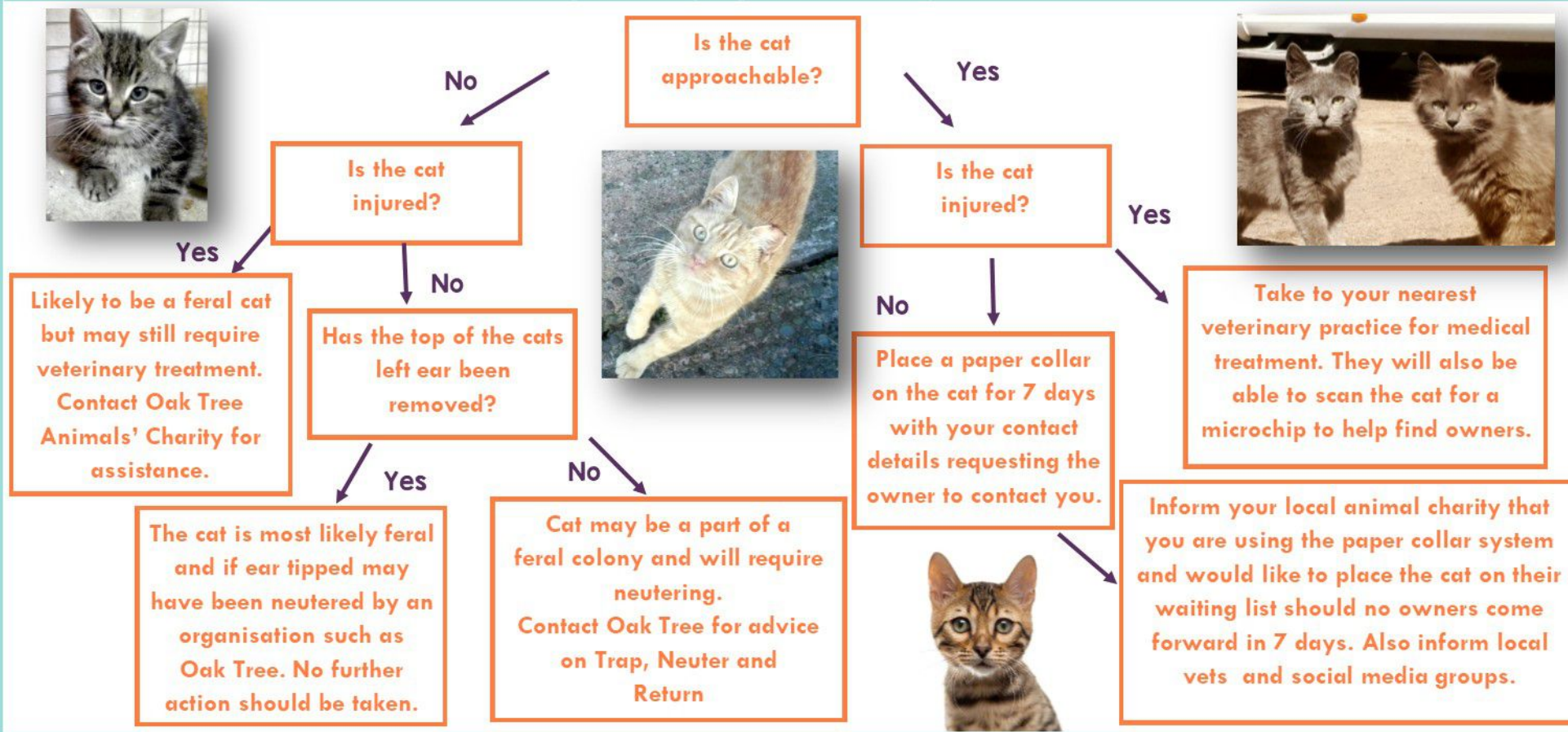


Stray Cat Flow Chart

What should you do if you come across a 'stray cat'



Firstly you will need to determine whether or not the cat is a stray, or is it in fact your neighbour who likes to roam. Try not to feed any cats in your area as this will encourage them to return. Follow these simple steps to helping the cats in your area.



For further information please speak with a member of our Community team on 01 228 560082
community@oaktreanimals.org.uk